



Cornwall
Education
Learning Trust

Newquay Primary Academy Area Resource Base Consultation



Building confidence and capacity: What this consultation is about

Dear parents and carers,

I'm delighted to offer you this consultation about the creation of an Area Resource Base for learners with Speech, Language and Communication Needs (SLCN) and/or autism at Newquay Primary Academy.

Delighted, because the SEND system too often ignores the voices of those who experience it. So this is a fantastic opportunity to hear from you.

Delighted, because it's only a few weeks since the government announced its reform plans for special educational needs provision, and already we are creating 73 new and much-needed specialist places across our trust.

And delighted because this represents a huge vote of confidence in CELT from the council – in our mission, our values and our ability to deliver.

This isn't just about creating new spaces for some children. It will allow us to develop the expertise and unlock the resources to make every classroom in each of our schools more inclusive – for the benefit of all.

The staff development we deliver to through our Centre of Excellence is already sector-leading. Our Learning Chronicles, Adaptive Teaching Toolkit and Individual Education Plans are already raising our standards of inclusion.

Now, with new Area Resource Bases and a specialist unit at CELT schools across St Austell and Newquay, we have a chance to ensure:

- every CELT teacher is a teacher of SEND,
- every learner who can safely be taught in a mainstream setting has the support to thrive,
- and every learner who needs more can access the right placement for them near to home.

A little over a year into my role as CELT's CEO, I couldn't be prouder of what we've delivered and I'm truly excited about the inclusive journey we're on.

I look forward to hearing your thoughts on this proposal, and I'll be in touch again in 3 weeks when we've gathered all your views.

With kindest regards,

Dan Morrow



About CELT

Our mission

To strive in everything we do to provide an exceptional educational experience for every learner.

Our values

COLLABORATE



We **build exceptional relationships** to ensure we are **working as a team** to achieve our individual and **collective goals**

EMPOWER



We have a culture of **initiative, innovation and trust** where **we are valued, respected and motivated**

LEAD



We share **a moral and ethical purpose** to **enrich the experience of others**

TRANSFORM



We **embrace change** and **value education** to become our best selves

Our Goals



Our Goals

1

Collaboratively enact an **ambitious** and **inclusive all-through** educational entitlement



2

Embed **strong relationships** with the **communities** we serve



3

Empower and **grow our people** to **support, teach and lead**



4

Grow from within and **reach out to work with all stakeholders**



5

Ensure we are an **effective, innovative** and **ethical** organisation



Exceptional • Educational • Experience



Newquay Primary Academy's Area Resource Base

Introduction

Cornwall Education Learning Trust is consulting on proposed changes to Newquay Primary Academy. This document describes what is being proposed and why.

What changes are being proposed?

The Area Resource Base (ARB) at Newquay Primary Academy will be a new provision with a maximum number of 25 places for learners between the ages of 5 and 11 with Speech, Language and Communication Needs (SLCN) and/or autism.

- Reception – 3 places
- Year 1 - 3 places
- Year 2 - 3 places
- Year 3 - 4 places
- Year 4 - 4 places
- Year 5 - 4 places
- Year 6 - 4 places

As part of our role within the wider SEND system, the ARB will fulfil three primary functions:

1. To provide continuity of education for learners with SLCN and/or autism from early years to key stage 2.
2. To address increasing demand for specialist places locally and strengthen family and community engagement.
3. To act as a hub of expertise for SLCN and autism across the trust, the region and nationally.

Why do we want to do this?

Newquay Primary Academy is a mainstream school, rated 'Outstanding' by Ofsted, with a strong commitment to inclusion and the capacity to expand its provision. Establishing an area resource base would enable the school to better meet the needs of learners requiring more specialist support while remaining in a mainstream setting, through targeted interventions, specialist teaching and tailored provision. This development would strengthen the school's inclusive ethos, respond to local demand for specialist places, reduce the need for out-of-area placements, and support positive academic, social and emotional outcomes for all learners while making effective use of existing expertise and facilities.





Why has this school been chosen/identified?

Newquay Primary Academy currently provides additional support for learners. However, the school does not currently have a formalised ARB.

In collaboration with Cornwall Council, it is proposed that the school establishes this provision to meet increasing local demand. This development will support learners with EHCPs for SLCN and autism while contributing to both the council's and the trust's strategic priorities.

Evidence of demand

There is a significant and growing need for specialist school places in Cornwall for learners with EHCPs, both in special schools and in resource bases within mainstream settings.

This proposal aligns with the local authority's sufficiency strategy and SEND strategic plan, which place inclusion at the centre of future provision. By increasing specialist support within mainstream schools, more learners can access education closer to home and within their local community.

This targeted investment is based on detailed analysis of local need and is focused on areas where demand is highest. As part of the mid-Cornwall sufficiency pilot, this development will also support clearer pathways between different types of provision, including opportunities for learners to transition into mainstream settings where appropriate.

When will these changes happen?

Following this consultation period, if the proposal is approved by the decision-maker, the changes will be implemented from September 2026 with:

- 9 places (Year EYFS, Year 1 and Year 2) to meet immediate local need
- September 2027 – 17 places (EYFS – Year 4)
- September 2028 – 25 places (EYFS – Year 6)

In addition, through CELT's broader development work, the ARB will also have access to Speech and Language Therapists and Educational Psychologists.

Will there be any effect on other schools, academies and educational institutions within the area?

There should be no negative effects on other special or mainstream schools, as the resource base will offer specialist provision for which there is a need, particularly in this locality. There is currently a shortage of places and no indication that other schools offering this type of provision will be negatively affected. Any impact on other schools should be positive as this proposal creates places for learners with SLCN and autism needs and therefore releases places at other schools to meet the needs of other learners.



How will the proposal increase educational standards and parental choice?

Cornwall Council is keen to ensure that future places are provided in the areas that they are needed, helping learners to attend a school nearer to home and as part of their local community. The proposed 25-place resource base will increase the number of primary places for learners requiring SLCN and autism provision and provide greater choice for families.

How will this affect learners at the school?

Current learners may notice the small increase to the total number of learners at the school. This change would not affect the admission arrangements, admission number or process for mainstream learners. The learners in the universal provision, who may need additional support with learning will further benefit from increased specialist support on site.

To be considered for a place in an ARB, the learner must have an Education Health Care Plan (EHCP) with their primary area of need identified as SLCN and/or autism requiring specialist support. The local authority SEN statutory team will allocate places in the base in consultation with CELT.

How will this affect staff?

Generally, staff will be unaffected and will experience more opportunities for professional development.

Will this effect travel and transport?

The impact on transport and travel will be minimal. The school will continue to update their travel plan, as and when required. The local education authority transport arrangements for learners with special needs will apply.

Will there be changes to the school building?

Existing space in the school has been identified that could be used for this area resource base. An external canopy to provide sheltered outdoor learning, that will match the EYFS and Year 1 provision, will be required.

What are the project costs for this proposal and how is it funded?

Funding for the resource base will be sought from Cornwall Council's High Needs Capital Grant. They will ensure that the project will deliver value for money. The ongoing maintenance of the resource base will be the responsibility of the school and funded via the school's delegated budget. The school will receive regular funding for resourcing the specialist provision.





Phase 1

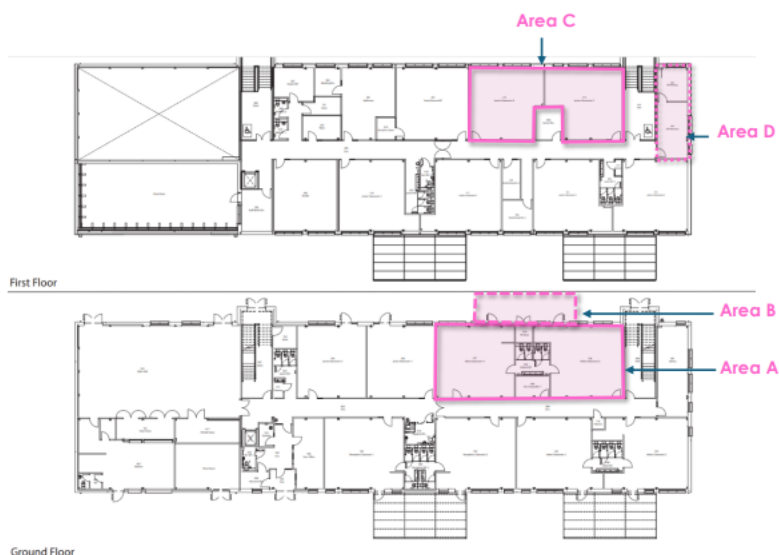
Area A: Ground floor specialist classrooms x 2

Area B: Canopied outdoor learning space – shared use for 2 classrooms

Phase 2

Area C: First floor specialist classrooms x 2

Area D: Therapy rooms – shared use with universal provision (mainstream)



Will this definitely happen?

There is a statutory process we must follow to make these sorts of changes to schools. We have had support from the local authority. Following this statutory consultation, the proposal will be shared with the Department for Education; they are the decision-maker for this type of proposal.

It is only after a decision that we will be able to say with certainty whether or not the proposal will be implemented. The decision will be published on our school website. We are anticipating this being June 2026.

What will happen if this proposal is rejected?

The school will continue to offer additional support to its learners. This would also mean that the council would need to identify alternative/additional places for learners that have an EHCP that require an additional resource base.

What is the curriculum offer?

Teaching at the ARB will draw on evidence-based frameworks including TEACCH, Intensive Interaction and sensory regulation approaches. The ARB will offer personalised communication-focused learning, integrated speech and language therapy practice, sensory-friendly environments, and structured mainstream inclusion. Our goal is that every learner placed here will benefit from approximately 50% of their time integrated into universal provision, accessing the core curriculum offer with their peers.



Your views: How to take part in this consultation

We invite all interested parties to give us their comment on this proposal.

- You can complete the survey by [clicking on this link](#) to share your comments. Please note: Completing this questionnaire will take a minimum of 3 minutes.
- You can also find information on the [school website](#) under the consultation tab.
- A consultation meeting where you can ask any questions on: 29th April at 3:00- 3:45pm.
- If you would like this letter or questionnaire in any other format, or if you would like to complete it online but can't access it for any reason, please contact NPAconsultation@celtrust.org, we will be happy to support you.

What are we asking?

To prepare your thoughts and make completing the questionnaire faster, the questions we would like to hear your thoughts on are copied below.

If you have any other questions or comments about this ARB or about our SEND provision, policies and processes that do not fit into the survey, please contact us separately. NPAconsultation@celtrust.org

Any comments must be received no later than 11:59am on Tuesday 12th May 2026.





Consultation Questionnaire for Newquay Primary Academy

As a valued stakeholder, we would be keen to hear your views on the proposal.

For the safety and integrity of this consultation, we will ask for your name and email address. We will not look at these when analysing responses and we will not publish your details at any point.

1. Name
2. Email address
3. Are you in favour of the proposal?
 - Yes
 - No
 - Unsure
4. Who are you representing?
 - Student
 - Parent/Carer at Newquay Primary Academy
 - Staff member at Newquay Primary Academy
 - Parent/Carer in the community
 - Member of education staff
 - Local resident
 - Cornwall Council
5. Please provide a comment